

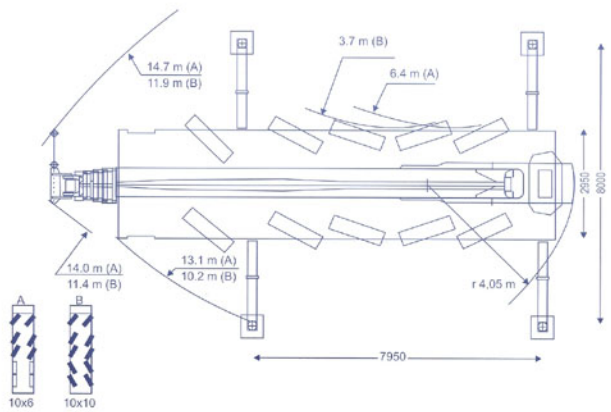
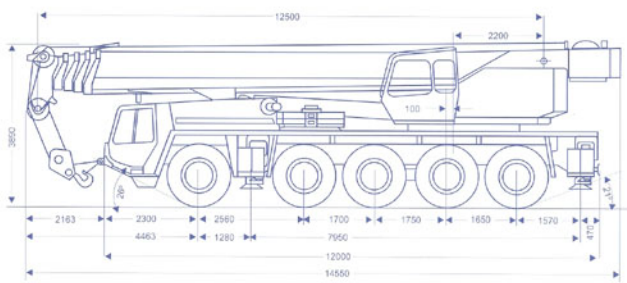


# NEBRASCO

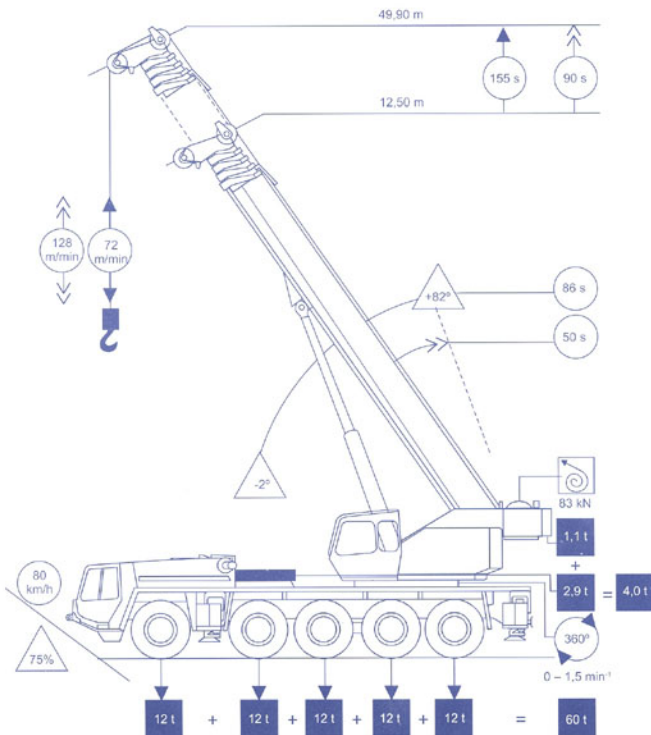
# Guindastes








Dimensões








## Dimensões

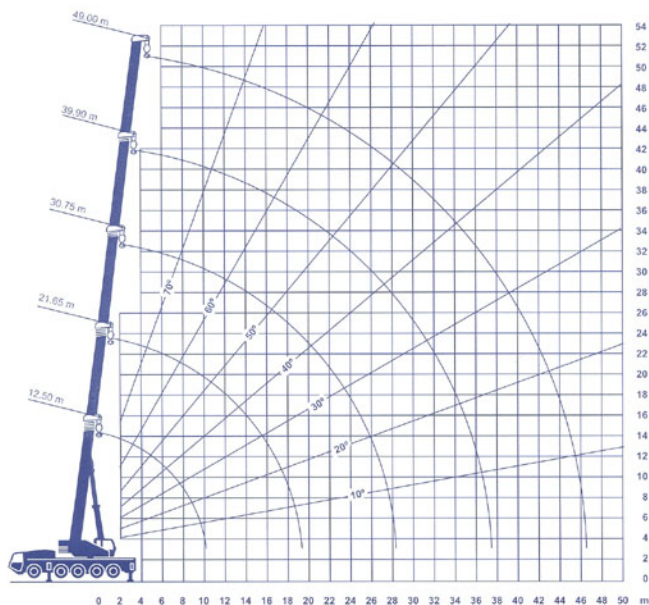


### Cargas Nominais Totais

						<b>29,4t</b>		<b>85%</b>	
 m	12,5 m**	12,5 m	21,65 m	21,65 m	30,75 m	30,75 m	39,90 m	39,90 m	49,00 m
3,0	130,0 ***	120,0 ***	55,0	23,0					
3,5	117,5 ***	110,1	55,0	23,0					
4,0	101,6	98,3	55,0	23,0	37,0	23,0			
4,5	92,0	86,7	55,0	23,0	37,0	23,0			
5,0	84,0	78,7	55,0	23,0	37,0	23,0			
6,0	71,6	67,0	55,0	23,0	37,0	23,0	23,0	23,0	
7,0	62,3	58,0	55,0	23,0	37,0	23,0	23,0	23,0	14,5
8,0	54,6	50,6	49,0	23,0	35,8	23,0	23,0	23,0	14,5
9,0	49,0	45,3	44,1	23,0	32,4	23,0	23,0	23,0	14,5
10,0			43,2	23,0	29,5	23,0	23,0	23,0	14,5
11,0			37,9	23,0	27,1	23,0	23,0	21,8	14,5
12,0			32,6	23,0	25,0	23,0	22,2	20,5	14,5
14,0			25,7	23,0	21,5	22,7	19,0	17,7	14,5
16,0			20,6	22,1	18,7	20,6	16,6	15,4	14,5
18,0			16,9	18,3	15,4	18,4	14,6	13,6	12,9
20,0					13,6	15,8	12,9	12,2	11,5
22,0					11,5	13,4	11,5	10,9	10,5
24,0					9,7	11,6	10,3	9,9	9,6
26,0					8,1	10,1	9,3	9,2	8,6
28,0						8,7		8,2	7,9
30,0								6,9	7,2
32,0								6,0	6,6
34,0								5,1	6,0
36,0								4,4	5,2
38,0									4,5
40,0									3,9
42,0									3,3
44,0									2,9
46,0									2,4
	I	0	50	25	100	50	100	75	100
	II	0	50	25	100	50	100	75	100
	III	0	0	25	0	50	50	75	100
	IV	0	0	25	0	50	50	75	100

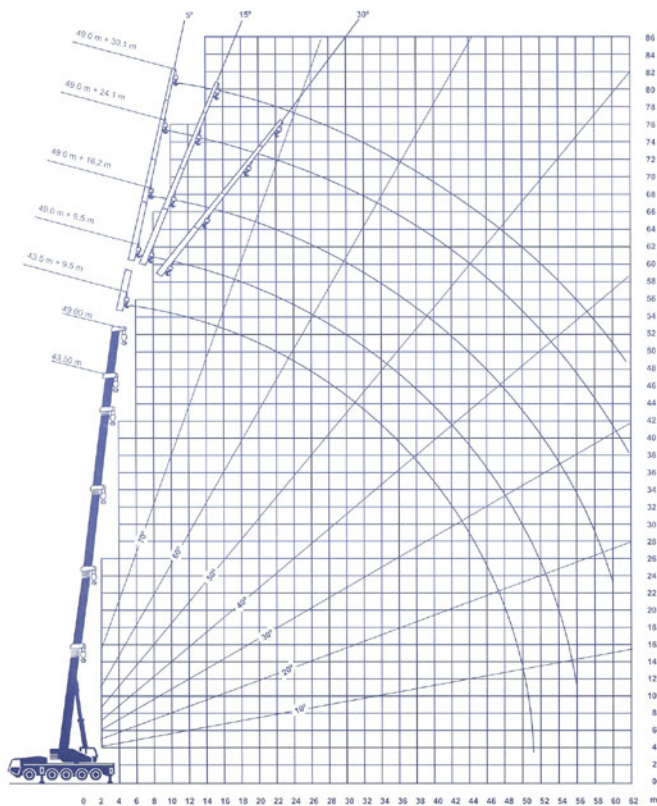
						<b>20,1t</b>		<b>85%</b>	
 m	12,5 m**	12,5 m	21,65 m	21,65 m	30,75 m	30,75 m	39,90 m	39,90 m	49,00 m
3,0	130,0 ***	117,5 ***	55,0	23,0					
3,5	112,0	104,7	55,0	23,0					
4,0	96,2	93,0	55,0	23,0	37,0	23,0			
4,5	87,2	83,5	55,0	23,0	37,0	23,0			
5,0	79,2	75,6	55,0	23,0	37,0	23,0			
6,0	66,5	62,3	55,0	23,0	37,0	23,0	23,0	23,0	
7,0	56,6	53,4	55,0	23,0	37,0	23,0	23,0	23,0	14,5
8,0	49,3	46,3	49,0	23,0	35,8	23,0	23,0	23,0	14,5
9,0	43,1	40,0	44,0	23,0	32,4	23,0	23,0	23,0	14,5
10,0			36,7	23,0	29,5	23,0	23,0	23,0	14,5
11,0			31,4	23,0	27,0	23,0	23,0	21,8	14,5
12,0			26,9	23,0	24,9	23,0	22,2	20,5	14,5
14,0			20,8	23,0	20,2	22,6	19,0	17,7	14,5
16,0			16,4	17,8	16,0	18,3	16,6	15,4	14,5
18,0			13,2	14,7	12,8	15,0	14,3	13,6	12,9
20,0					10,5	12,8	12,0	12,2	11,5
22,0					8,5	10,6	10,0	10,7	10,5
24,0					6,9	9,1	8,5	9,2	9,3
26,0					5,6	7,9	7,1	7,9	7,9
28,0					4,5	6,7	6,0	6,7	6,6
30,0							5,1	5,6	5,6
32,0							4,1	4,6	5,0
34,0							3,4	4,1	4,1
36,0								3,6	3,5
38,0							2,7	3,6	2,9
40,0									2,4
42,0									2,0
44,0									1,6
46,0									1,2
	I	0	50	25	100	50	100	75	100
	II	0	50	25	100	50	100	75	100
	III	0	0	25	0	50	50	75	100
	IV	0	0	25	0	50	50	75	100

## Raio de Operação - Diagrama





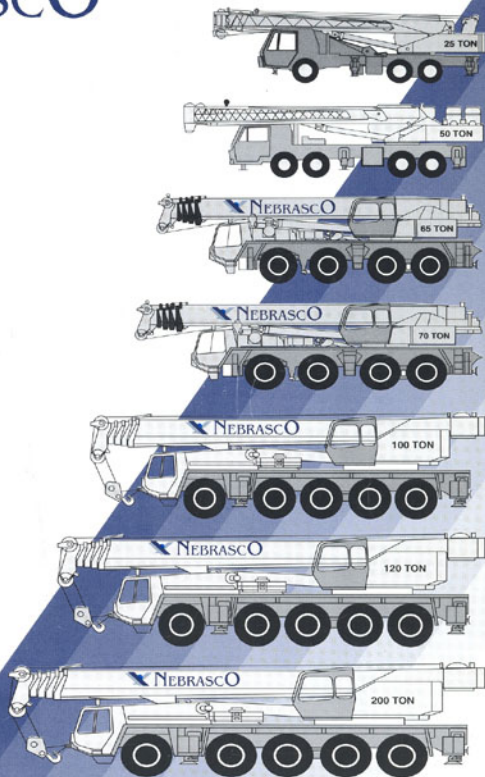
## Raio de Operação - Diagrama





NEBRASCO

Pontualidade e Segurança



NEBRASCO S/A - Equipamentos e Máquinas  
Av. Pavão, 214 - CEP 04516-010 - São Paulo - SP

**TEL./FAX: (11) 5542.6511**

E-mail: [nebrasco@nebrasco.com.br](mailto:nebrasco@nebrasco.com.br) - <http://www.nebrasco.com.br>